

## Chapter 24

Text Pages 679–683

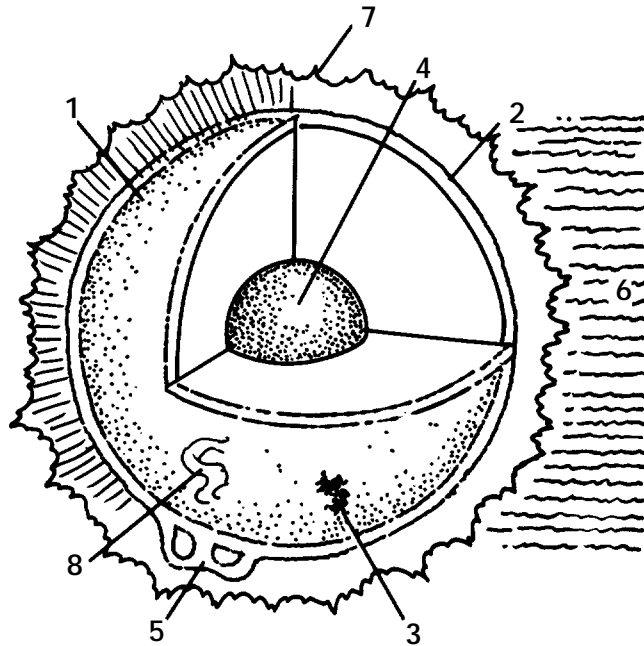
## STUDY GUIDE

## ● The Sun

Identify the sun's features in the illustration by writing the name of each feature in the appropriate space below. The features are listed in the box.

core	corona	solar wind	chromosphere
photosphere	solar flares	prominence	sunspot

1. \_\_\_\_\_
2. \_\_\_\_\_
3. \_\_\_\_\_
4. \_\_\_\_\_
5. \_\_\_\_\_
6. \_\_\_\_\_
7. \_\_\_\_\_
8. \_\_\_\_\_



In the space provided, fill in the missing term. Choose terms from the box above.

- \_\_\_\_\_ 1. In the \_\_\_\_\_, hydrogen is fused into helium.
- \_\_\_\_\_ 2. A \_\_\_\_\_ is a dark area of the sun that is cooler than the surrounding area.
- \_\_\_\_\_ 3. The \_\_\_\_\_ is the lowest layer of the sun's atmosphere from which light is given off.
- \_\_\_\_\_ 4. \_\_\_\_\_ is made up of charged particles that continually escape from the corona and move through space
- \_\_\_\_\_ 5. The \_\_\_\_\_ is the largest layer of the sun's atmosphere.
- \_\_\_\_\_ 6. The \_\_\_\_\_ extends upward about 10 000 km.
- \_\_\_\_\_ 7. A huge, arching column of gas is a \_\_\_\_\_.
- \_\_\_\_\_ 8. Gases near a sunspot that suddenly brighten, shooting gas outward at high speed, are called \_\_\_\_\_.